

Unique Views  
GUIDING LIGHT



WESTCOAST WINDOWS

# Welcome

Founded in 1995, Westcoast Windows has brought to the industry a wealth of innovative design and production experience to become one of Scandinavia's leading manufacturers of genuine high performance aluminium / timber composite windows and doors. A unique system has been developed, tested and proven in one of the World's toughest climates - the West coast of Sweden.

Here in the UK, Westcoast have supplied windows to over 500 building projects as diverse as individual residential schemes through to major health, education, housing and commercial developments in both the private and public sectors.

Together with this knowledge, we have blended a fresh and forward thinking approach to our customers' requirements which, combined with a continuous programme of design development and testing ensures that Westcoast remain at the very forefront of advanced fenestration technology.

**'We have a commitment to Clients and their needs by ensuring our competence, expertise and attitude to business is ever developing.'**

Westcoast Windows' customer based philosophy has helped us to develop an extensive range of products aimed at providing affordable windows and doors which exceed contemporary performance standards, whilst offering building designers the greatest possible degree of freedom and flexibility.

In line with our partnering approach to the industry, customers and construction professionals alike will appreciate the benefits of working with a company that has at its heart a total commitment to Health & Safety, Quality and The Environment.

With this background, Westcoast Windows has an excellent understanding of today's market and a clear vision of its future.

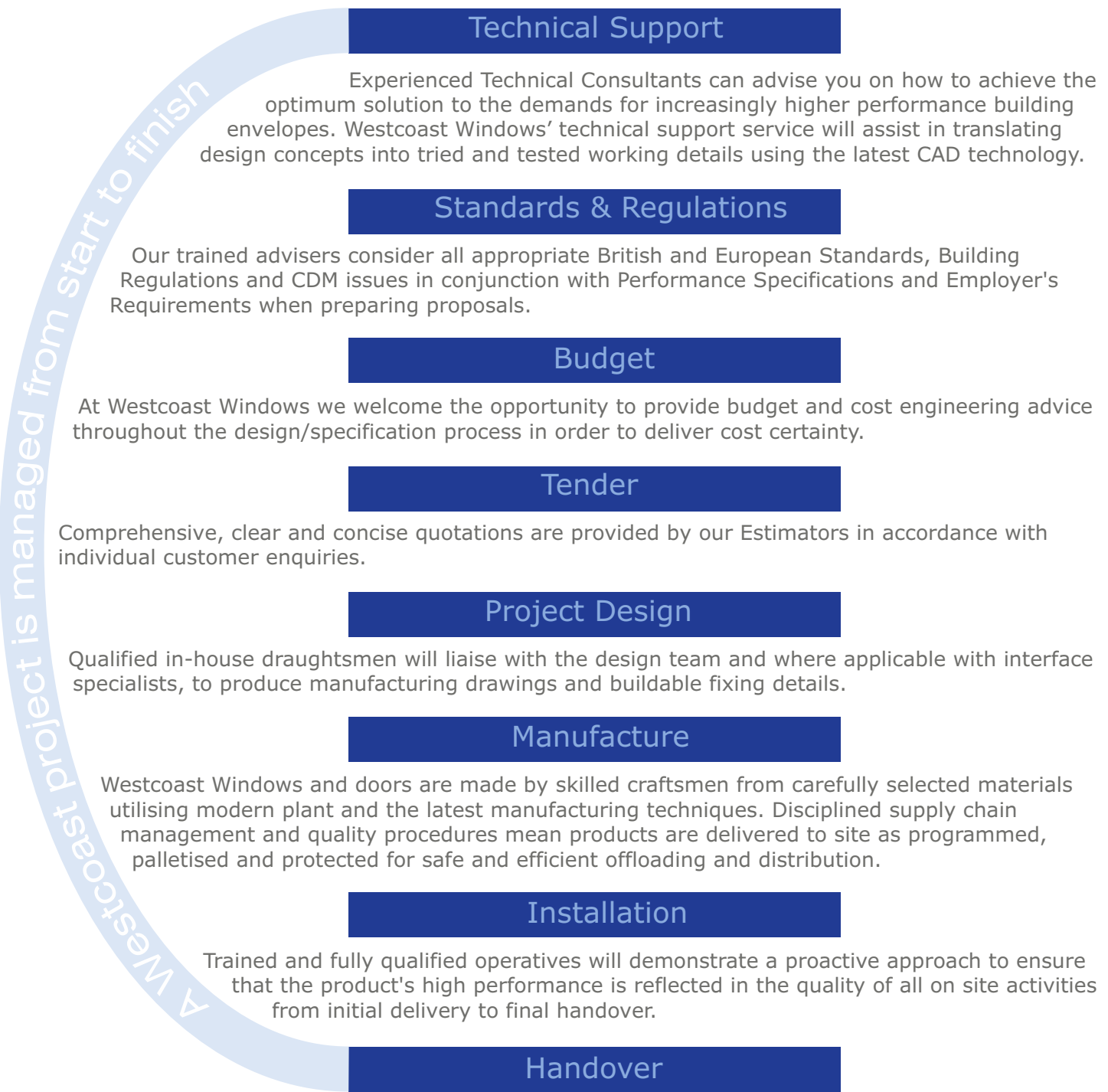
COVER & BELOW: Mile End Park  
(Gardner Stewart Architects Ltd)



# Total Service

Unlike many ordinary window suppliers, at Westcoast Windows we have always embraced the concept of providing a comprehensive design, manufacture and installation service.

Together with our UK Partners, we provide personal attention to detail and a disciplined approach at all stages, from initial enquiry through to the final handover of a successful project.



Westcoast Windows recording and inspection procedures are aimed at providing trouble free handover on time and within budget.



Independent Testing, Inspection and Certification  
Quality Health & Safety Environment





**TOP:** Westway Beacons, London  
(Gardner Stewart Architects Ltd)

**LEFT:** Laycock Primary School  
(project5 Architecture)

**BELOW:** East London PDU  
(Nightingale Associates)





**TOP:** Northern General Hospital, Sheffield  
(Race Cottam Associates)

**RIGHT:** Stonehouse Hospital, Dartford  
(Hunter & Partners)



# The Westcoast system

Designed and tested to exceed all contemporary standards, the Westcoast system offers a comprehensive range of purpose made factory finished windows, doors and associated products at affordable prices. The system comprises both outward and inward opening windows and doors, suited fixed lights, panels, louvres and operating mechanisms which are all custom manufactured to size, shape and finish offering designers the flexibility to create the facade of their choice.

An extensive range of opening styles, glazing configurations and ironmongery options are produced to meet virtually any performance requirement, especially in matters of thermal insulation, acoustic attenuation, solar control, safety and security. This means that Westcoast is the solution for most commercial and residential projects, whether they are new build or refurbishment schemes. Westcoast windows have a wood / aluminium construction. Elegant aluminium profiles on the outside and warm inviting timber on the inside combine the benefits of both materials to provide a durable low maintenance exterior with the comfort, visual appeal and performance benefits of superior quality internal joinery

"All the style of aluminium,  
all the warmth of wood."

## Westcoast outward opening system



Double Glazed Composite

Triple Glazed Composite



## Westcoast inward opening system



Double Glazed Composite

Triple Glazed Composite



Triple Glazed 2+1 Composite





## State of the art design

28mm or 36mm double/triple glazed sealed units or 2+1 coupled sash configuration to specification.

Internal or external security bead glazing.

Superior quality laminated North European Redwood from sustainably managed forests with high grain density for outstanding strength and stability.

High performance silicone and Epdm weatherstripping, combined with concealed multipoint espagnolette locking for maximum weathertightness.

Internal timber fully factory finished to specification.

Precision assembled timber frames and sashes with pinned and bonded comb joints.

External aluminium frame entirely bonded and mechanically fixed to internal timber with cleated and mitred corner joints.

Aluminium profiles polyester powder coated to specification.

Drained and ventilated glazing system.

## Quality as standard

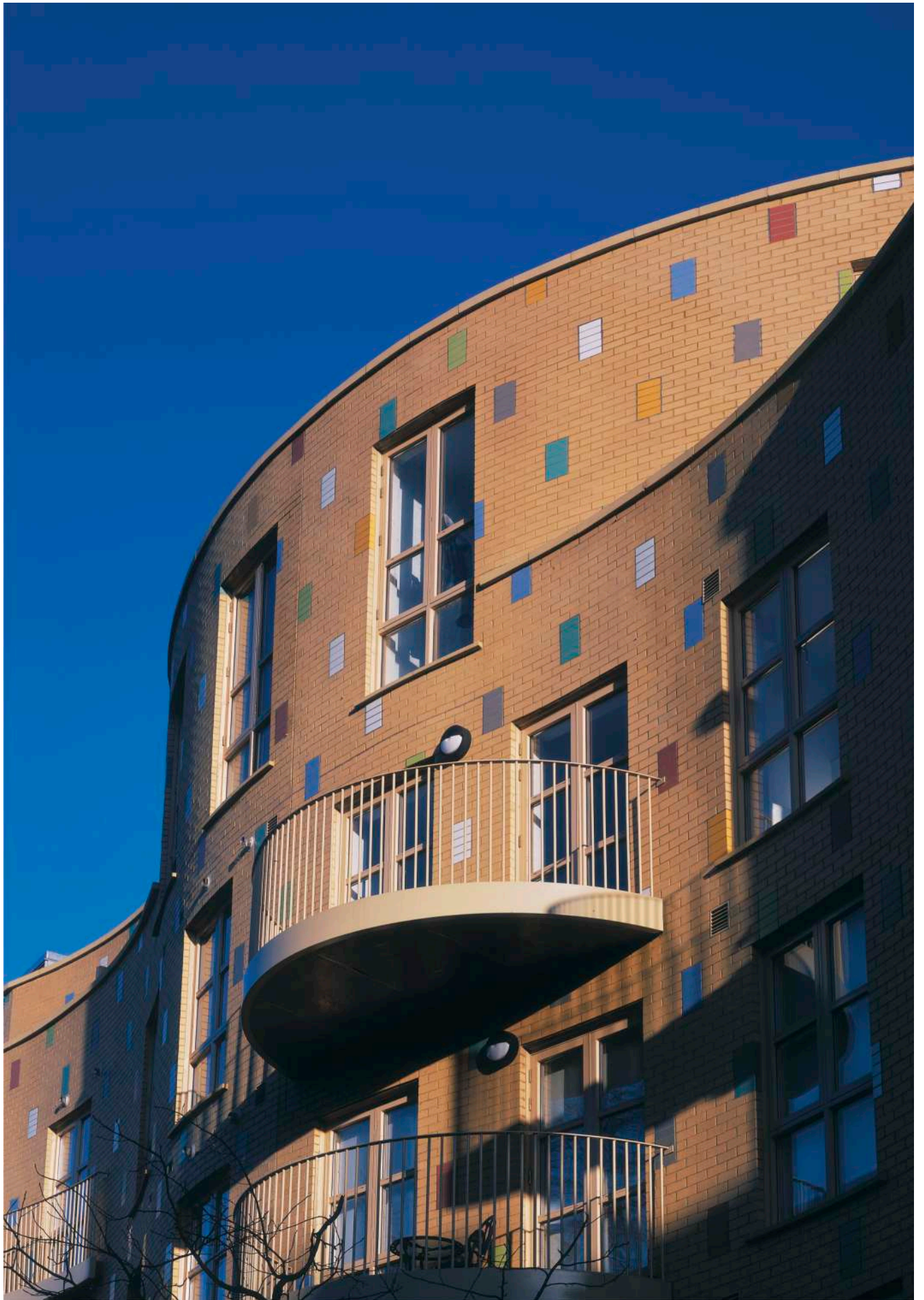
Westcoast system windows and doors are available in a full range of opening styles, including the latest top hung and side hung reversible mechanisms.

Supplied fully factory finished and glazed to specification, they come complete with an extensive choice of ironmongery options for safe, secure and trouble free operation.

The concealed action of the projecting top hung reversible mechanism of Westcoast windows allows easy, yet safe cleaning and re-glazing from inside. Strong and well balanced, the entire 'reversing' action takes place outside the window frame so there is no fouling of curtains, blinds or internal fitments. The easy glide hinges incorporate integral safety restrictors in both the opening and fully reversed cleaning positions whilst the concealed multi-point locking espagnolette provides a secure night vent facility.

"At Westcoast, we know that a good window needs to be multitasked"

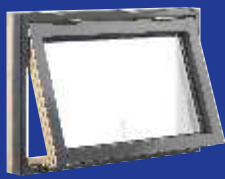




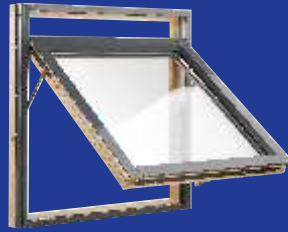


**TOP:** Resource Centre, Earley  
(Jessop & Cook Architects Ltd)

**LEFT:** Fulham Island, London SW6  
(CZWG Architects)



**THG**  
Top hung



**TSG 45**  
Top hung, projecting



**TSG 180**  
Top hung, reversible



**SHG**  
Side hung



**SSG 90**  
Side hung, projecting



**SSG 180**  
Side hung, reversible



**BHI**  
Bottom hung, inward opening



**SHI**  
Side hung, inward opening



**TT**  
Tilt and turn

“high performance, high quality,  
multi-tasked, competitively priced”



**FDG/L**  
Outward opening door



**SHID/L**  
Inward opening door



**TSD**  
Tilt and slide door



**SHI 2+1**  
Coupled sash, side hung  
inward opening



**TT 2+1**  
Coupled sash, tilt and turn



**SHID 2+1**  
Coupled sash, inward opening  
door



**BHI 2+1**  
Coupled sash, bottom hung,  
inward opening



The Pinnacle, Bournemouth  
(Cube Design Ltd)



**TOP:** Resource Centre, Earley  
(Jessop & Cook Architects Ltd)



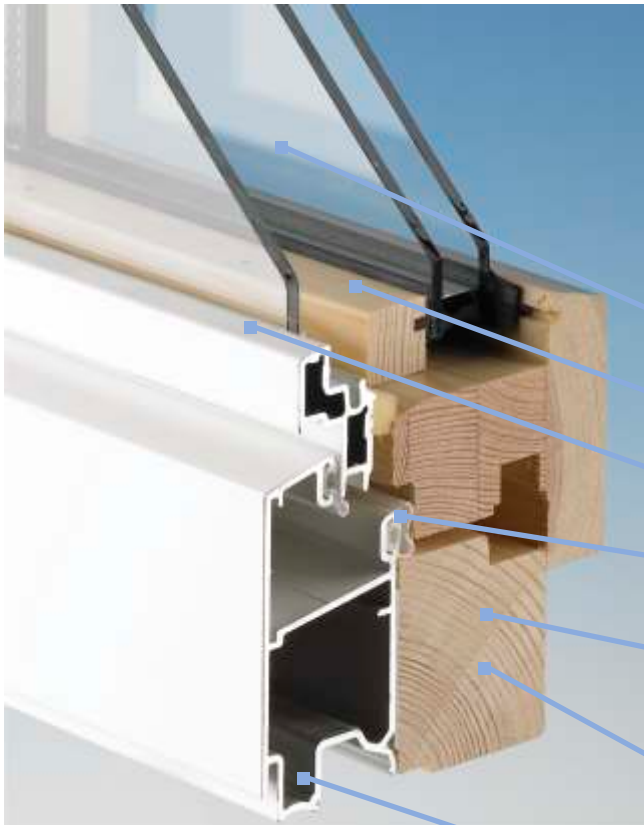
**LEFT MIDDLE:** Private Residence, Aldeburgh  
(Craig C Driver BA (Hons), DipArch)

**RIGHT:** Lauriston Development Basingstoke  
(Jessop & Cook Architects Ltd)

**BELOW:** 51° 02' Bristol  
(Hemingway Architects)







## Coupled Sash

Triple glazing includes options for thermal and acoustic insulation, safety and security.

High quality ironmongery including concealed multi-point espagnolette locking, anti-slam friction stays and a wide range of operating handles, safety and security devices.

Coupled sash with ventilated air gap for optimum acoustic performance.

Air gap can accommodate solar control blind systems.

Aluminium profiles polyester powder coated to specification.

Special Epdm composite seals for maximum weathertightness.

Frame depth of 85mm giving excellent thermal properties with good cavity closing characteristics.

Superior quality laminated North European Redwood from sustainably managed forests with high grain density for outstanding strength and stability.

External aluminium frame entirely bonded and mechanically fixed to internal timber with cleated and mitred corner joints.

Many Westcoast windows are available in a coupled sash (2+1) configuration. This method of construction was initially developed in Scandinavia to meet the high standard of thermal insulation demanded in conditions of extreme cold.

Since then the Westcoast coupled sash concept has been refined into the most advanced window of its type and offers a wide range of additional benefits, particularly in terms of noise insulation and solar control.

They have a single glazed outer aluminium sash and an inner timber sash fitted with a sealed glazing unit. Both sashes open as one, but can be uncoupled.

The ventilated air gap between the inner and outer sashes provides increased air volume within the window construction, resulting in significant acoustic attenuation even when glazed with standard 4mm or 6mm glass.

In addition, manual or remote operated integral blind systems can be accommodated within the coupled sash cavity for comfort and privacy or in the case of modern low energy buildings, to achieve appropriate shading co-efficient requirements.

**TOP RIGHT:**  
St Andrews Street, Norwich  
(Chaplin Farrant Ltd)



## Performance

### Weathertightness

Precision machining and assembly, together with the use of multipoint espagnolette locking, superior weatherstripping materials and sealants, ensures Westcoast windows perform to the very highest classification categories of EN1026, EN1027 and EN12211 for Air Permeability, Watertightness and Wind Resistance.

### Safety

Westcoast windows and doors are designed to combat risks to safety as well as to provide convenience and ease of operation. Windows are fitted with a variety of opening and cleaning position safety restrictors, locking devices, anti-slam friction stays and safety glass to offer complete peace of mind to the user.

### Security

Robust construction, combined with concealed multipoint espagnolette locking and high performance security devices, means the Westcoast system offers exceptional levels of security. For enhanced security performance requirements Westcoast windows and doors can be supplied in accordance with BS7950/PAS24 Secured by Design standards.

### Solar control

The Westcoast system can be specified with double or triple glazed sealed units which incorporate the latest generation of solar control glass from Europe's leading manufacturers. Westcoast coupled sash windows and doors can also be supplied with integral blind systems for additional solar control and anti glare purposes.

### Thermal insulation

Exceptional standards of thermal insulation with the use of high grade timber with a very low thermal transmittance value, greatly reducing heat loss through frame members. Double or triple glazed sealed units combined with the latest low emissivity coatings and the use of insulated spacers and gas filling, means Westcoast products can be supplied with whole window U-values of less than  $1.0 \text{ W/m}^2\text{K}$ .

### Acoustic attenuation

Careful attention to design and detailing means that all Westcoast windows offer a high standard of noise insulation. Double glazed windows can typically provide a sound reduction of up to 44dB(Rw) with the use of special laminated glass. For higher performance, Westcoast coupled sash and double windows offer even higher performance.



## **WESTCOAST WINDOWS**

**Westcoast Window Systems Ltd**

Unit 8 Brickfields Business Park  
Old Stowmarket Road, Woolpit,  
Bury St Edmunds, Suffolk IP30 9QS  
Tel: 01359 241944 Fax: 01359 241059  
[www.westcoastwindows.com](http://www.westcoastwindows.com)

Authorised Westcoast Window Dealer

